

Survey for Dan V. Burt in N.E. 1/4 Sec. 30  
T. 6 N. - R. 1 W.

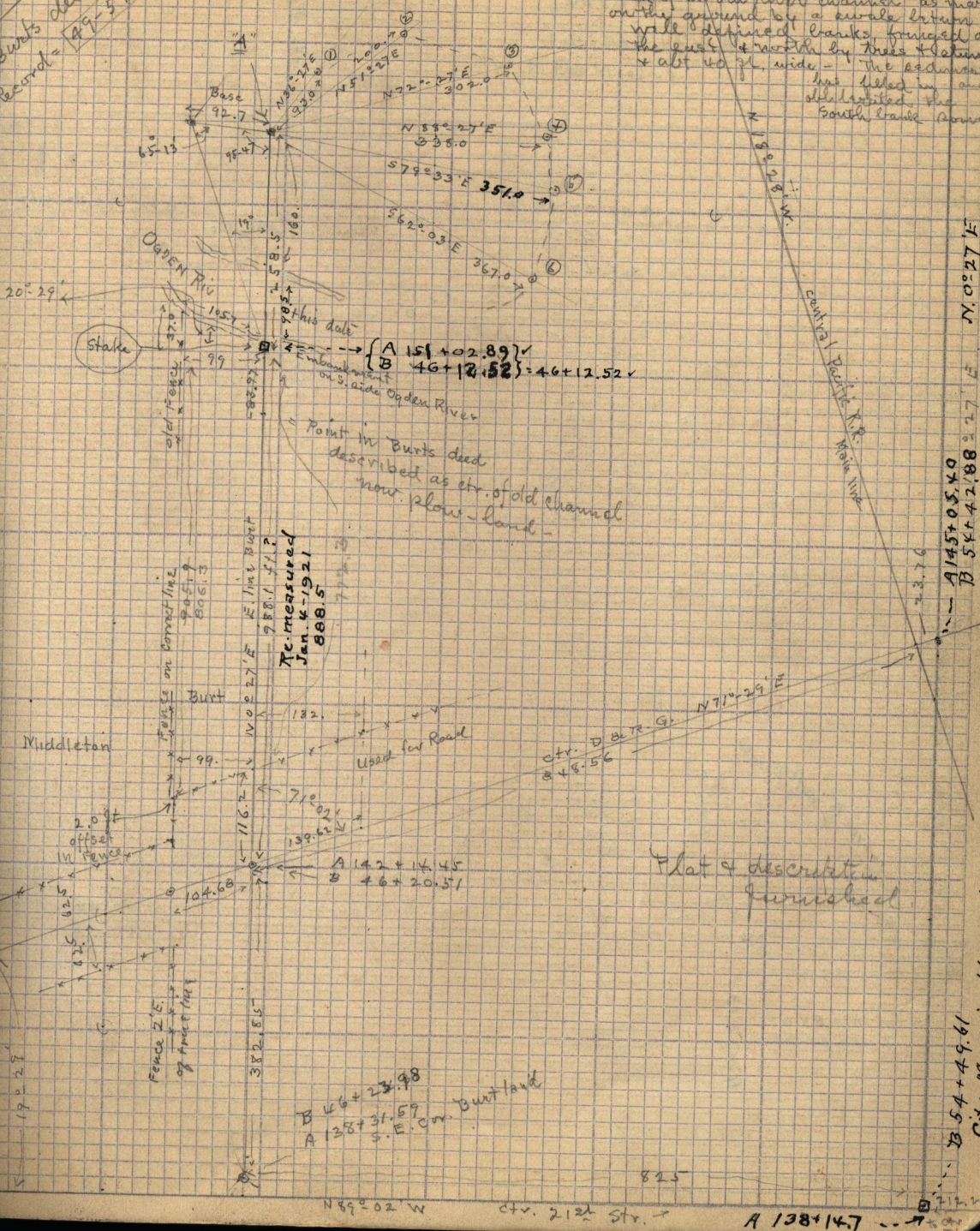
(65)

Aug. 29, 1920 to locate the old bed of Opden River  
Corrections in measurement as shown, Jan. 4-1921.

See Book P. 109  
Burt's deed  
Record = 49-594

The Nos ①-②-③-④-⑤-⑥

are located on what appears to be the West bank of an old river channel, as marked on the ground by a small stream & well defined banks, fringed on the east & north by trees & shrubs. The sediment has filled in and obliterated the South bank above which



N. 0° 27' E  
 23.76  
 A 145 + 05.40  
 B 54 + 42.88 = 27  
 str. D & R G. track.  
 B 54 + 49.61  
 City man. in old location set by me.

N 89° 02' W  
ctr. 212' str.

A 138 + 14.7